



STARCOAT-CRC™ (2Hours Fire Rated Ductwork Coating)

Description

STARCOAT-CRC™ is a Primer/Top Coating to provide protection against fire and heat for all structural steel work walk ways old and new, Kitchen Ventilation duct, Smoke exhaust duct & Car Parking Exhaust Duct etc which have been galvanized. The coating is not recommended for non-ferrous materials, stainless steel and plastic- or plastic-coated materials.

STARCOAT-CRC™ is a single component water base self priming and top coat of various metals. It is heat resistant, Fast drying self primer and fire-retardant coating. This product has excellent adhesion properties with good impact resistance.

Advantages

- Fire Retardant Coating
- Excellent heat resistant up to 1133°C
- Chemical Resistant
- Excellent impact and abrasion resistant
- Brushable/ Sprayable Depending Upon Area
- Suitable for all zones of India

Certifications

Properties	Result
Confirms to	BS 476 Part 20 & 24 (2Hours Fire Rated Ductwork system) Entire Duct testing with Fire Paint @ 1133°C for 120 Minutes)
Confirms to	BS 476 Part 6 (Non-Combustible, Class-O Material)
Confirms to	BS 476 Part 7 (Fire Propagation, Class-1 Material)
Confirms to	Impact Resistance-No Loss of Adhesion - IS:5585-120Nm
Confirms to	Artificial Weather testing ASTM G154
Confirms to	Corrosion Resistance ASTM-D 1654

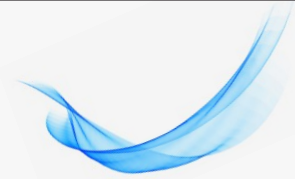
Specific Technical Data

Properties	Result
Specific Gravity	1.36 ±0.02
Solid Content	68% ±2%
Heat Resistance	1133°C
Technical Coverage	1.3 to 1.5 m ² /Kg based on an applied @ 0.7mm to 1mm (DFT)
Application Temperature	-5 to 55°C
Self-Life	12 Month from the date of Manufacturing

Surface Preparation

All surface should be free from loose rust, Mild Scale and Contaminants such as oil, Grease Dirt, and Salt. Before any surface preparation is attempted, oil and grease must be removed by suitable means or any solvent cleaning.

Use commercial blast cleaning in case of heavy corrosion to remove mild scale, rust and other contaminants and leave a roughened surface.



Method of Application

Generally, STARCOAT-CRC™ is best applied by brush or roller. Due to the rapid drying of the coating, areas may be coated by roller. Care must be taken to ensure that the CRC is applied uniformly. Large horizontal surfaces should be spray applied, but however it can be applied with brush or roller.

Application Mode

- Spray-Use airless spray or conventional spray
- Brush-Recommended for all areas but care must be taken to achieve the required DFT

Mixing

Being a single component product, it should be mixed thoroughly till homogenous solution is obtained. If the setting is observed, Loosen the settled material with the help of and stirrer, followed by power driven stirrer. For best results use spiral mixing blade at variable speed (400-600 rpm).

Cleaning

Clean all the tools with water.

COVERAGE

The coverage of STARCOAT-CRC™ may vary and depending upon surface condition, but the general coverage is 1.3 to 1.5m²/Kg.

STORAGE & SELF LIFE

Store under cover and protect from direct sunlight and temperature (>25°C). Self-life is up to 12 months for un-opened container when stored as directed. Failure to comply with the recommended storage conditions may result in premature deterioration of the protect.

PRECAUTION & LIMITATIONS

Material Safety Data Sheet (MSDS) is supplied on request.

SUGGESTED SPECIFICATION:

Providing required Fire Rating for stability and integrity, each duct shall have fire rated STARCOAT-CRC™ water base coating. Fire rated coating compound used for construction of fire rated ductwork shall be protected with minimum 0.7mm to 1mm nominal thickness tested to properties as per the requirements of BS 476 Part: 20 & 24, Including BS 476 Part-6 non-combustible class-O and BS 476 Part-7 fire propagation class-1 surface spread of flame and part 20 & 24 test shall be entire system testing, Materials in accordance with the building regulations.

PACKING

Available in 20 kg air tight plastic pail.

For professional use only. Keep out of reach of children.

Due to continuous product improvements, the data mentioned in the TDS is subject to change without prior intimation. All recommendations and suggestions are therefore made without guarantee. Samples will be provided on request to enable customers to satisfy themselves as to the suitability of the product for any specific purpose and to assess the product under their own working conditions. The application, use and processing of our products and the products manufactured by you on the basis of our technical advice are beyond our control and, therefore, entirely your own responsibility.